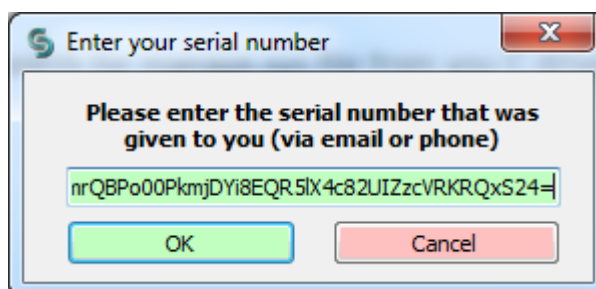


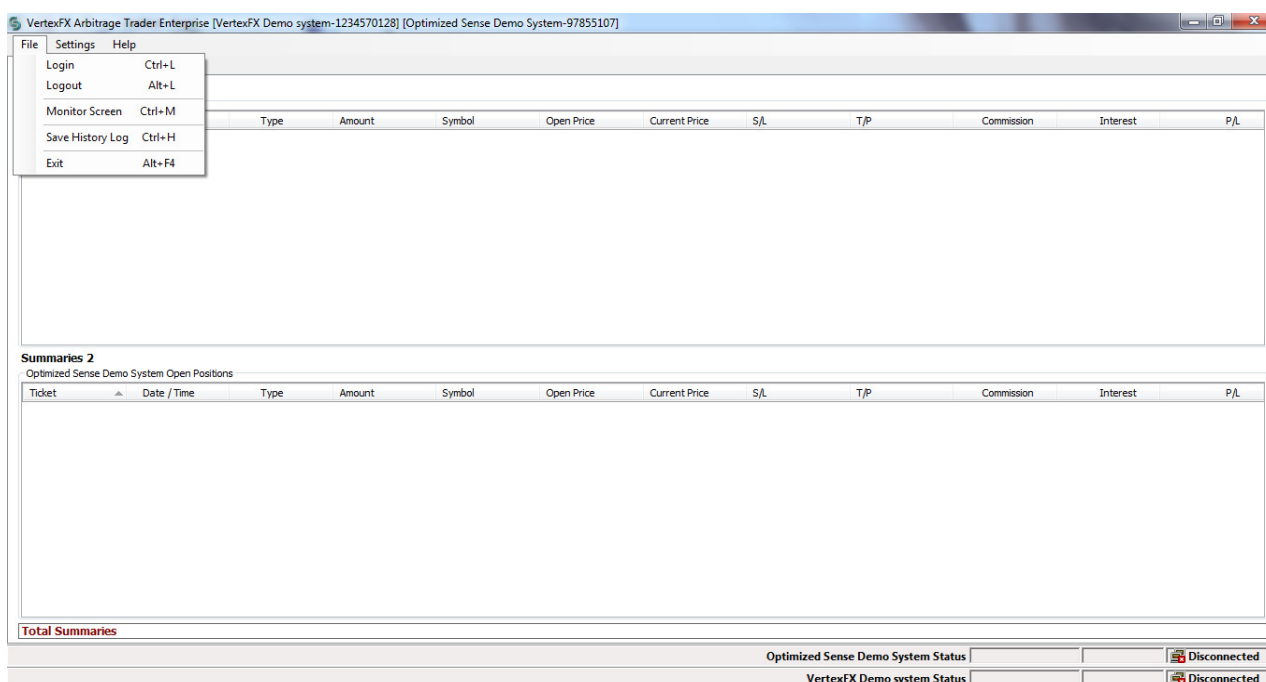
## How to use VertexFX Arbitrage Trader Enterprise Edition

In this article I'm going to explain to you how to use VertexFX Arbitrage with all its functionalities.

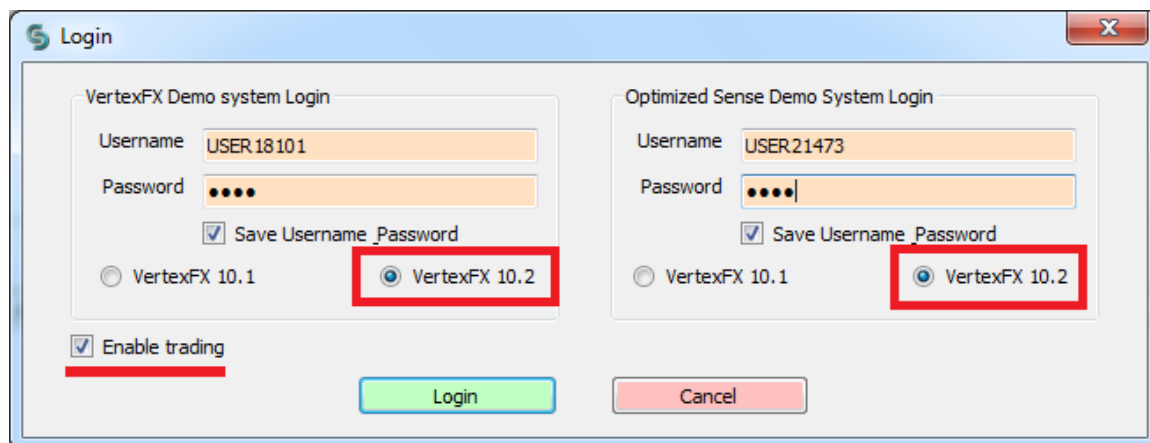
- 1- First thing you need to open VertexFX Account with 2 VertexFX brokerages, and you need to ask for those VertexFX brokers Server IP, Port and register using the following link: <https://www.o-sense.com/products/vertexfx-arbitrage-trader.html>
- 2- Once our related team receive your register info, we are going to send you the serial to start trading.
- 3- When you run VertexFX Arbitrage, you will get a screen asking you to Enter Your Serial Number that been delivered to you from our team.



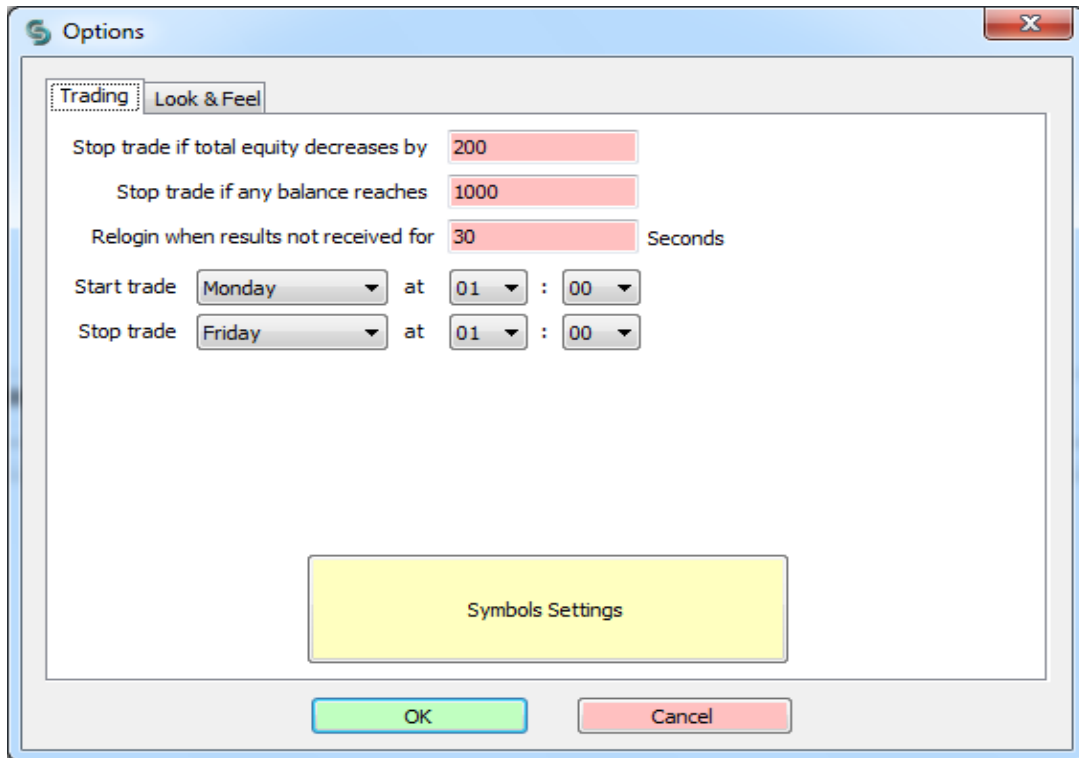
- 4- After that you need to go to File → Login from the main screen:



- 5- You need to be sure from your both VertexFX Brokers system version, and choose the correct version, and you can enable the trading once you login using your current configured setting, or you can disable the trading till you configure your trading rules.



- 6- After you login with both brokers, you need to go to **Settings** → **Options** to configure:
- **Stop Trading if Both Total Equity Decreases** by XXX (200 for example or any other value), this option allows you to stop trading if you were not monitoring your Arbitrage trader. So, if the equity decreases by that amount from the total Max equity (Max Equity of Both companies), then it will stop trading..
  - Also you can stop trading automatically if **one of both brokers balance will be reached less than XXX (1000 for example or any other value)**.
  - **Relogin When Result Not Received For** option allows the system to automatic relogin if there is some network connection between you and the server.
  - The you need to configure the beginning **weekly trading time**, and **weekly closing trading time**.

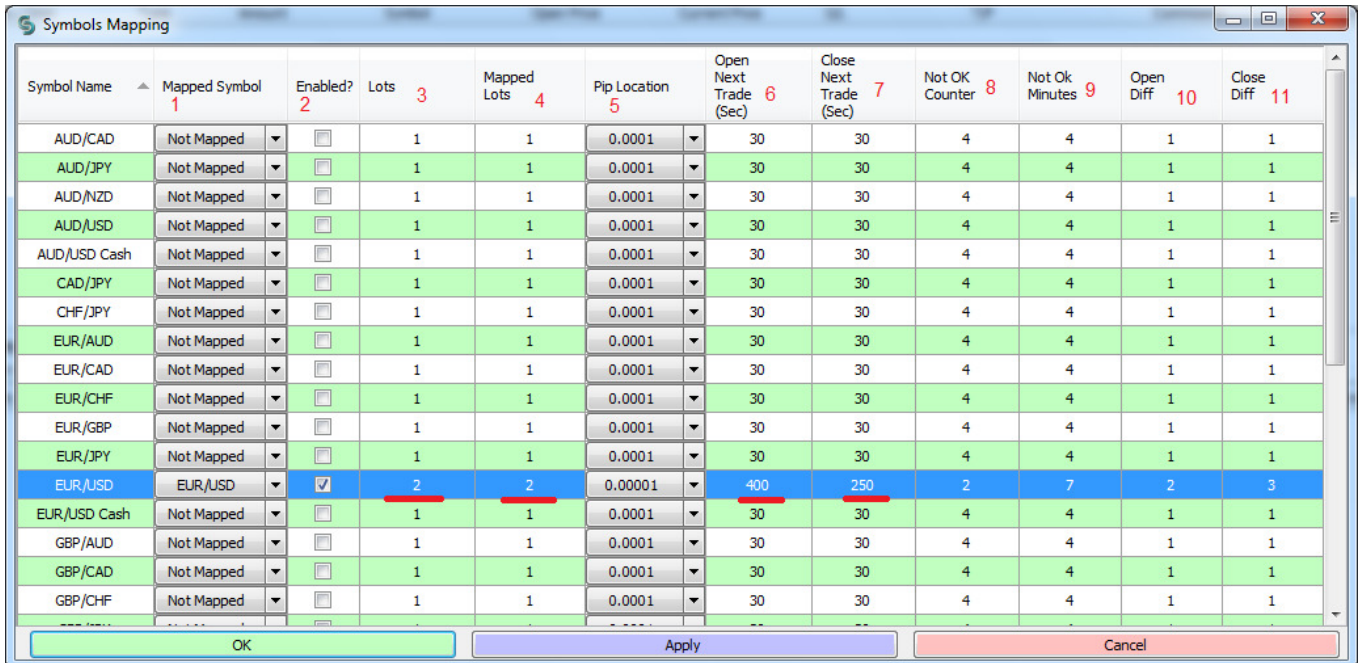


The image shows a software dialog box titled "Options". It has two tabs: "Trading" (selected) and "Look & Feel". The "Trading" tab contains the following settings:

- Stop trade if total equity decreases by: 200
- Stop trade if any balance reaches: 1000
- Relogin when results not received for: 30 Seconds
- Start trade: Monday at 01 : 00
- Stop trade: Friday at 01 : 00

At the bottom of the dialog box, there is a yellow button labeled "Symbols Settings". Below the dialog box are two buttons: "OK" and "Cancel".

7- **Symbols Settings** option is the main required configuration should be configured in a good way, and you need to be careful about all those setting that we are going to explain:



Symbol Name	Mapped Symbol	Enabled?	Lots	Mapped Lots	Pip Location	Open Next Trade (Sec)	Close Next Trade (Sec)	Not OK Counter	Not Ok Minutes	Open Diff	Close Diff
AUD/CAD	Not Mapped	<input type="checkbox"/>	1	1	0.0001	30	30	4	4	1	1
AUD/JPY	Not Mapped	<input type="checkbox"/>	1	1	0.0001	30	30	4	4	1	1
AUD/NZD	Not Mapped	<input type="checkbox"/>	1	1	0.0001	30	30	4	4	1	1
AUD/USD	Not Mapped	<input type="checkbox"/>	1	1	0.0001	30	30	4	4	1	1
AUD/USD Cash	Not Mapped	<input type="checkbox"/>	1	1	0.0001	30	30	4	4	1	1
CAD/JPY	Not Mapped	<input type="checkbox"/>	1	1	0.0001	30	30	4	4	1	1
CHF/JPY	Not Mapped	<input type="checkbox"/>	1	1	0.0001	30	30	4	4	1	1
EUR/AUD	Not Mapped	<input type="checkbox"/>	1	1	0.0001	30	30	4	4	1	1
EUR/CAD	Not Mapped	<input type="checkbox"/>	1	1	0.0001	30	30	4	4	1	1
EUR/CHF	Not Mapped	<input type="checkbox"/>	1	1	0.0001	30	30	4	4	1	1
EUR/GBP	Not Mapped	<input type="checkbox"/>	1	1	0.0001	30	30	4	4	1	1
EUR/JPY	Not Mapped	<input type="checkbox"/>	1	1	0.0001	30	30	4	4	1	1
EUR/USD	EUR/USD	<input checked="" type="checkbox"/>	2	2	0.00001	400	250	2	7	2	3
EUR/USD Cash	Not Mapped	<input type="checkbox"/>	1	1	0.0001	30	30	4	4	1	1
GBP/AUD	Not Mapped	<input type="checkbox"/>	1	1	0.0001	30	30	4	4	1	1
GBP/CAD	Not Mapped	<input type="checkbox"/>	1	1	0.0001	30	30	4	4	1	1
GBP/CHF	Not Mapped	<input type="checkbox"/>	1	1	0.0001	30	30	4	4	1	1

**7.1-** As you can see from the first option for each symbol, you need to map the symbols between the first company and the second company, because the name of symbols between those 2 companies maybe different.

**7.2** Then you need to enable the Arbitrage trading "In option 2" to trade on specific symbols that you need, by enable the Check box.

**7.3** Option 3, you need to choose the trade amount that you need in the first company.

**7.4** and in option 4 you need to choose the trades amount for the second company.

**7.5** you need to enable the pip locations that you want to trade on, as example if the first company use EURUSD as 4 pips "0.0001" and the second company use EURUSD as 5 pips "0.00001", so you need to chose the bigger value of the pip location which is 5 pips.

**7.6** This parameter allows the Arbitrage to take a new order every specific period of time to avoid scalping the broker, so even if there is arbitrage opportunity and this period not passed, it will not take a new order.

**7.7** This parameter allows the Arbitrage to close the current option positions for the specific symbols every specific period of time to avoid scalping the broker, so even if there is arbitrage opportunity and this period not passed, it will not close the current position.

**Note:** Regarding to point **7.6 & 7.7** the Arbitrage may get an opportunity to close and open new positions, but it will not open and close positions because of this period not passed, and it will show you all the details in the History log screen.

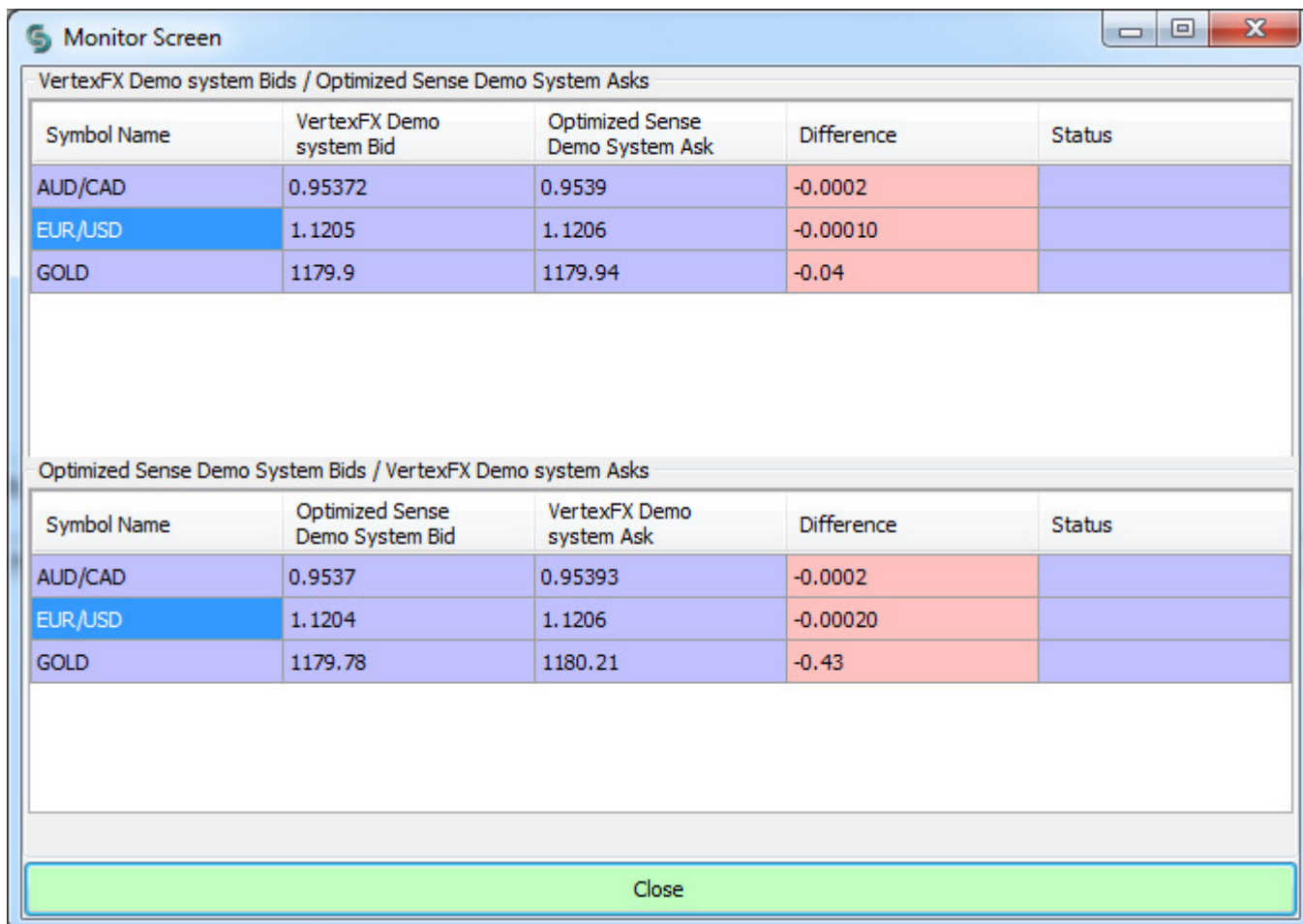
**7.8 Not Ok Counter,** if one of 2 brokers didn't accept your order for some reason or the arbitrage has not get a feedback from one of the brokers for count of times, it will stop trading on that symbol for XXX minutes according to option **7.9**.

**7.9 Not Ok Minutes,** if one of 2 brokers didn't accept your order for some reason or the arbitrage has not get a feedback from one of the brokers for XXX times (on **7.8**), it will stop trading for XXX minutes on this option.

**7.10 Open Different,** you need to configure when to open new position if the difference between Ask price of one company and Bid price of the other company reach to this value.

**7.11 Close Different,** you need to configure when to close current opened position if the difference between Ask price of one company and Bid price of the other company reach to this value.

- 8- From File, you can choose Monitor Screen option to monitor the enabled symbols and check the prices and the different between those 2 brokers.



The screenshot shows a window titled "Monitor Screen" with two data tables. The first table compares VertexFX Demo system Bids and Optimized Sense Demo System Asks. The second table compares Optimized Sense Demo System Bids and VertexFX Demo system Asks. Both tables show prices and differences for AUD/CAD, EUR/USD, and GOLD. A "Close" button is visible at the bottom.

VertexFX Demo system Bids / Optimized Sense Demo System Asks				
Symbol Name	VertexFX Demo system Bid	Optimized Sense Demo System Ask	Difference	Status
AUD/CAD	0.95372	0.9539	-0.0002	
EUR/USD	1.1205	1.1206	-0.00010	
GOLD	1179.9	1179.94	-0.04	

Optimized Sense Demo System Bids / VertexFX Demo system Asks				
Symbol Name	Optimized Sense Demo System Bid	VertexFX Demo system Ask	Difference	Status
AUD/CAD	0.9537	0.95393	-0.0002	
EUR/USD	1.1204	1.1206	-0.00020	
GOLD	1179.78	1180.21	-0.43	

Close

- 9- History Log screen will show you all details for success orders and for any order who has not opened for one of the brokers, with all details.

For any further help, do not hesitate to contact us at [support@o-sense.com](mailto:support@o-sense.com)